



ANCIENT ECHOES ANCIENT ECHOES ANCIENT ECHOES

Volume No. 24 Issue No. 2

April, May, June, 2014

MEMBERSHIP MEETING

Thursday, May 1st, 7 p.m.

In The Theater of The Arizona Museum of Natural History
53 N. Macdonald (Enter from First Street)

Guest Speaker, Tom Jones

Conducting Archival Research in Arizona

Mr. Thomas Jones has over 18 years experience in archeological investigations, historical artifact analysis, historic research and National Register nominations, documentation for HABS/HAER, and historic building inventories. Mr. Jones is currently Chair of the Phoenix Historic Preservation Commission, as well as Chair of the Historical Archaeology Advisory Committee (HAAC). He also serves on the Governor's Archaeology Advisory Commission (GAAC).

Historical archaeology examines human behavior through material remains (artifacts) and the written record (archival research), incorporating concepts from multiple disciplines, such as history, geography, and ethnography. Through the interaction of material remains and available archival records, historical archaeologists seek to document the fabric of everyday life, while simultaneously contributing to the understanding of regional social development. Thomas Jones, in his presentation for SWAT, will address the significance of Archival research in the preparation of historical contexts, developing areas of significance, and assessing the eligibility of documented historic properties.

Mr. Jones is Chair of the (HAAC), which will soon release its seventh edition of the Historical Archaeology in Arizona Research Guide. When HAAC was first established in 1999, one of its first projects was the publication of Historical Archaeology in Arizona: A Research Guide (2001). Now in its sixth edition, this guide is intended to direct historians and researchers seeking information on a historical place or person in Arizona to resources held in numerous repositories (i.e. libraries, historical societies, institutions, and government agencies), as well as Internet sites with credible archival information. We encourage the public-at-large to also take advantage of this useful document for personal projects and research.

Hope to see all our members for this interesting presentation before the long summer break. A short update on projects precedes the speaker and refreshments will be served immediately after.

Also In This Issue:

Spreading The Word

Outreach Efforts 2

Guided Tour

Mesa Grande Stories 3

Milk Barn

Work Continues 3

Got Mud?

Visitor Sends T-Shirts 4

SWAT Recognized

National Volunteer Week 4

Donated Items

AzMNH Collection Grows 5

This Is Your Last Newsletter If You Haven't Renewed!

Some of you have forgotten to pay your dues and others of you have moved far away. Stay in touch with us and we'll do the same. SWAT's dues are the lowest in the state which you can still take advantage of for 2014. Please check your records to ensure we have your dues for 2014!

Chair Chatter

Donna Bengé
Chairperson



Spring is here, and summer will not be far behind. That means that some of our outdoor projects will come to an end when the temperature gets to 100+. But in the meantime, we're still hard at work at the Toltec School in Eloy, Milk Barn at the Park of the Canals, and at the Mesa Grande and Pueblo Grande mounds.

On March 31st about a dozen of us enjoyed a beautiful day at the Arizona Archaeology Expo at Catalina State Park just north of the Catalina Mountains near Tucson. At least 1000 visitors came, and we kept busy helping many learn how to throw rabbit sticks at our metal/rubber rabbits. We divided up the rabbit responsibilities among us so we could all have a chance to take part in the field trips to the historic Steam Pump Ranch, and the Honeybee and Romero archaeology sites. Besides that we enjoyed visiting the participants and learning what they are doing in archaeology. I was honored to be a part of a panel to tell an audience all about SWAT and what we do. You know what I realized? We really do a lot to contribute to the preservation of prehistoric and historic sites throughout the state! Next year's Expo will be at the historic Army Depot State Park in Yuma, a lush green tree shaded park beside the Colorado River.

At our next meeting, Tom Jones will be detailing how research is done for historic structures. Some of us have had the exciting experience of delving into archives, Sanborn maps, etc. to glean as much information as possible before actually starting on some of our projects. I think you will enjoy knowing how and where you might look to find out about a site. This can include little clues at the sites too. You won't want to miss this meeting – and refreshments too.

Looking into the future to our fall meeting on October 2nd, we'll be learning about a recent archaeology excavation at Luke Air Force base.



SWAT's Message Reaches Community!



SWAT table at the Archaeology Expo manned by Judy Allen, Rosalind Myers and Marie Britton.



Tim Walters helping make faux rocks the AzMNH booth at the Mesa Makers Festival.

Mesa Grande Sherds Present Puzzles For SWAT Lab Team

By Donna Bengé

We are again analyzing sherds from Mesa Grande. Every week, we find one or two specimens that are very different from anything we have seen before. We always wonder about exactly what was going on at the site and who was visiting from throughout the state. There must have been some select pots there that were in a market or were there to trade.

After finishing what we are now doing, we may take a break for the summer. What we really need to do is work on getting our boxes of artifacts in order, but work on the Federal Building where all of our new selves are located seems to have really slowed down so we wonder when we'll be able to do this. Right now we have boxes scattered here and there and have no place to put many of them.

Leading Mesa Grande Mound Tours Is Challenging And Rewarding

By Carla Booker

"I found a treasure" exclaimed a young boy as he and his classmates quickly ran up the path to show me what he had found. I've heard that proclamation many times over the past 15 years while giving tours at Mesa Grande. However, instead of marveling over a small sherd or lithic, this time the budding archaeologist proudly dropped a dead, very crispy, lizard, with one leg missing, into my hand. How cool is that! I really enjoy giving tours at Mesa Grande. Each one presents it's own unique challenges and rewards. Luckily for me, since the opening of Mesa Grande Cultural Park, the number of tours I give has increased significantly.

When it comes to giving tours, there is no one size fits all approach. What works for one group, may not work at all for another. Therein lies the challenge. It is my job as a guide to share information in such a way that each person leaves with at least a cursory understanding of who the Hohokam were and why they are so important to our existence in the desert. Hopefully, they also learn something about the more recent history of Mesa Grande and archaeology in general. In order to do a good job, I am constantly tailoring my tours to address

the age or needs of the group. That can be particularly challenging when there is a wide age range. It is hard enough to keep the attention of a middle school child, but add a couple of kindergartners to the mix, and lets just say things can get very lively.

I tend to be very animated when giving a tour for a couple of reasons; one, because it helps keep the groups attention which makes it easier to impart information. And two, it's just more fun that way. By encouraging guests to use their imagination, I try to paint a virtual mural of what life may have been like when the Hohokam lived in the valley. It is so rewarding when I see a person and can tell, just by the look on their face, they get it.

Mesa Grande Cultural Park is open from October through mid-May. Arizona weather doesn't get any better than during those months. So, how about treating yourself and your family and friends to a tour? Information on booking a tour can be found by visiting the Arizona Museum of Natural History web page: <http://azmnh.org/> and clicking on the Mesa Grande Cultural Park logo. I hope to see you on a tour soon. Who knows what treasures you may discover.

Milk Barn Project Is Continuing

By Jim Britton

For those of you who are not familiar with the Milk Barn, here is a little background information. This two room structure is located in the "Park of the Canals" and is owned by the City of Mesa. Many years ago when there was a park ranger living in a house nearby, SWAT used the barn for storage. When the house was vacated and no one was nearby to watch the barn, vandals began destroying it. The City encircled the structure with two fences to protect it. Jerry Howard alerts City personal when we will be working at the site. For the past four years SWAT members have been repairing damage and doing restoration work.

Several pieces of metal roofing and rotted purlins that support the metal sheets of roofing were replaced by the end of 2011. Last year we began reconstructing the door and window frames. For the past two years, we



KJ Schroder reconstructing cobble wall above window.

have been taking advantage of Pat Kelly's carpentry skills and equipment before he returns to his summer home in Idaho. A vandal had pulled out the west window frame causing the stone wall above the lintel to collapse. K. J. Schroder wanted to get some cobble wall construction experience, so after the new window frame had been installed; he reconstructed that portion of the wall using mortar mixed by Wilson Allen. Six panes of thick Plexiglas have been installed in place of the usual window glass. Other SWAT

members who have helped are: Dick Brown, Bert Strobl, Ed Mack, and Donna Bengé.

We still have work to do at the site. We will have to replace several rafters and the ridge caps on the newer room and fill several very small holes in the old metal sheets. The doors and locks need to be installed. For more information concerning workdays contact Jerry Howard, Donna Bengé or Jim Britton.

Tourist-Mudslinger Creates T-Shirts

By Jim Britton

During our workday in March several Mudslingers got to meet and work with a special person from California named Cheryl. I thought it would be interesting to have her share her experience with you all.

"I was in town to attend spring training baseball games mainly at ballparks I hadn't seen before and do other things before and after the games."

"On Saturday (March 15), I went to Pueblo Grande Museum in the morning. As I was walking along the trail, I asked the people working on the ruins what they were doing. I found out they were PGM mudslinger volunteers stabilizing the ruins. Volunteer Jim asked me if I wanted to volunteer and I said "Can I really?" He said yes and warned me I would get dirty. Jim explained the process of mudslinging to me and put me to work next to two young experienced women (Lindsay and Samantha) I could "copy" and also ask for help. I had so much fun being a participant, making a difference and getting muddy. I got splattered and splattered others. Volun-



Lindsay Sheppard modeling one of the "Got Mud" T-shirts embroidered by Cheryl.

teer Lindsay said it would be nice to find "got mud?" t-shirts. I said I could embroider some for them and send them to them if I got their address but we didn't have pens at the time. After we ran out of regular mud, Jim explained how to use slurry and put me to work on cracks at the top of the ruins. Other tourists asked about the work and I explained how I was lucky to become a tourist mudslinger. I told Jim about wanting to make the "got mud?" t-shirts. I was not sure Jim believed I would make them but he gave me his email and street address. I embroidered several "got mud?" t-shirts and sent them to Jim. Being a Mudslinger for three hours was a fantastic, unique, unforgettable experience."

The volunteers who were working in March with Cheryl will get first pick of the shirts.

The thrill of being a Mudslinger has been experienced by many volunteers over the past 20 years. If you would like to join the Mudslingers, contact Jim Britton at (480)827-8070.

The next work day is scheduled for May 17.

SWAT Recognized On National Volunteer Week

Contributed by Yvonne Petersen
Volunteer Coordinator for AzNMH

"If you have knowledge, let others light their candles by it"

According to the Points of Light, the world's leading volunteer organization with more than 20 years of history, National Volunteer Week is about inspiring, recognizing and encouraging people to seek out imaginative ways to engage in their communities. It's about demonstrating to the nation that by working together, we have the fortitude to meet our challenges and accomplish our goals.

National Volunteer Week is about taking action and encouraging individuals and their respective communities to be at the center of social change – discovering and actively demonstrating their collective power to make a difference.

SWAT Volunteers demonstrate their power to make a difference through the preservation and lab work they are doing. Restoring and preserving historic buildings and archeological sites helps educate our communities and makes a difference for generations to come. The information discovered in the field and in the lab will also help educate our city and state governments on the importance of preservation. SWAT volunteers show fortitude to meet challenges and accomplish goals. As a staff and organization we want to thank you for your dedicated service to the field of archeology.



Check out SWAT's Facebook page.

Just go to Southwest Archaeology Team on facebook under fine friends. There are many pictures of our group's trip down to Tucson's Catalina State Park for the 2014 Archaeology and Heritage Awareness Expo. SWAT had made up sturdy Rabbits forms out of metal and foam (which were shaped and painted to look like rabbits.) People then throw the rabbit sticks and try to hit one of the rabbits. It's much harder than it looks. Check out our page!

Hard At Work

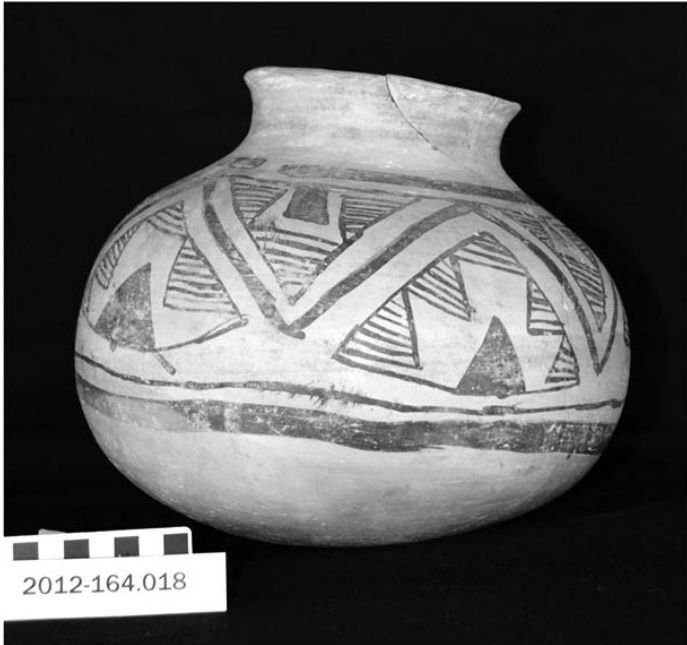
Dr. Emily Early is our new Associate Curator of Anthropology at AzNMH. She is focusing her work on developing the curriculum for school programs at Mesa Grande and creating other public events.



New Donation Corner

By Margaret McMinn-Barton
Collections Manager

For this month's installment, we have a sample of the large ceramics acquired from the American Southwest. These ollas are very large and rare items.



Jeddito storage olla, Anasazi, Pueblo IV, ca. AD 1275 – 1400

Jeddito is an ancestral Hopi ware. This is a Black-on-orange storage vessel, painted with geometric design around the body. The solid framing horizontal lines have a “spirit break”. The ceramist achieved the creamy yellow or buff color by use of low-iron clays with iron-manganese and iron oxide pigments fired in an oxidizing atmosphere, using coal to obtain higher firing temperatures.



**Tularosa fine line storage olla. AD 1175 -1300
Arizona/New Mexico/Mexico**

The artist decorated this large coiled storage vessel with a fine-line pattern painted on a white-slipped base. The spiral-painted designs are typical Tularosa-style. Fine lines fill the background on all but the basal portion of the body. A stepped solid line surrounds the spirals and forms the lower boundary of the decoration. Additional stepped solid lines form part of this lower edge. Paint is mineral-based.



Tonto polychrome olla, large, ca. AD 1340 – 1450

Redware storage vessel, painted with a geometric design around the entire vessel body. Upper and lower solid bands have “spirit breaks”. The neck is decorated with black-on-white/cream interlocking designs.

Toltec School Work Continues

Slowly but surely we are making progress each month. Much of the plastering that needed to be done in the girls' and boys' bathrooms has been completed. Many have worked hard removing paint from two black-board borders and from around the stage opening. After many coats of paint remover and much sanding, we will soon be ready to stain and varnish the wood.

Besides what we are doing, Dick Myers always manages to make some contacts to get other jobs done such as plumbing, electrical work, and having some wood planed. Eventually, the school will become the Santa Cruz Valley Historic Museum after much more work has been done.

New **Membership Application** Renewal

Name: _____

Address: _____

City: _____ State: _____ Zip: _____

Home Phone: _____ Work Phone: _____

Email: _____

Date: _____

Membership Type: Family (\$20) Individual (\$15) Student (\$10)

Family Member Names: _____

Areas Of Interest

I Want To Help With

- Calling Committee
- Education/Teaching Programs
- Excavation
- Lab Analysis
- Stabilization
- Survey

I Want To Learn More About

- Excavation Techniques
- Historic Preservation
- Stabilization Techniques
- Survey Techniques
- Other: _____

Return This Form To: Southwest Archaeology Team
PO Box 5368, Mesa, AZ 85211-5368

Southwest Archaeology Team

SWAT, Inc.,
PO Box 5368, Mesa, AZ
85211-5368

www.southwestarchaeologyteam.org

Officers

Chairperson

Donna Benge (480) 969-0578

Vice-Chairperson

Kathleen Krider (480) 926-6690

Secretary

Richard Brown (480) 964-8011

Treasurer

Jim Britton (480) 827-8070

Directors

Carla Booker (480) 730-5171

Joe Burkett (480) 949-0477

Alex Howard (480) 254-2501

Sylvia Lesko (480) 497-4229

Bert Strobl (480) 220-0986



Southwest Archaeology Team

Arizona Museum of
Natural History
53 N. Macdonald
Mesa, AZ 85201

Ancient Echoes is the
newsletter of the Southwest
Archaeology Team, which is in
a cooperative agreement with
the Arizona Museum of
Natural History



Address Correction Requested